



ARTDECO

PERFECT MAT

# *lipstick*

NEW SHADES

SAMPLES: CW 20/2025  
DELIVERY: CW 20/2025

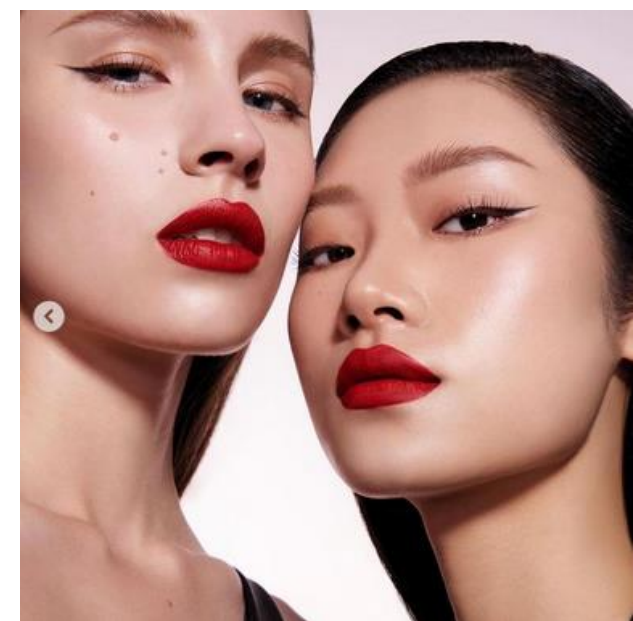
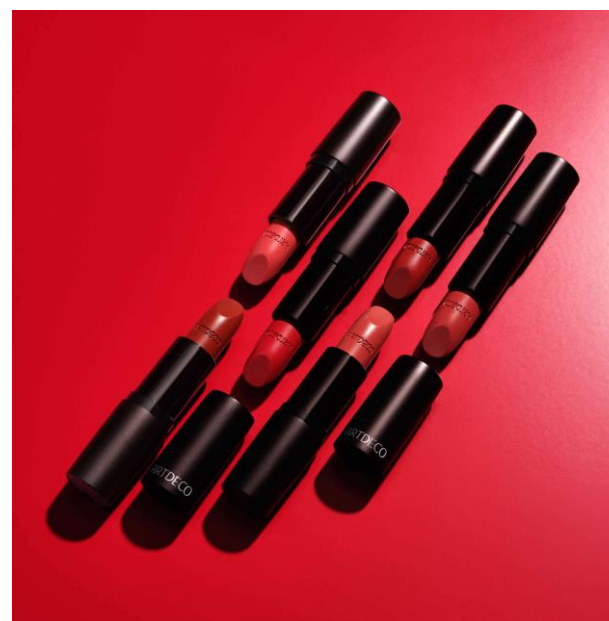
COLLECTION ORDER 08/25:  
Perfect Mat Lipstick

Please return before the 10<sup>th</sup> of December 2024!

All information within this collection order should only be used for internal presentations! Do not use any pictures for any press or online publications!

## 4 NEW SHADES OF MATTE PERFECTION

Due to the success of the launch of a shade extension for our APAC region beginning of 2024, we have added additional four new complementary shades to the product line.



# *pro ducts*

*1* PERFECT MAT LIPSTICK – 4 NEW COLORS & BASIC

## PRODUCT - LIPS



N°212  
*graceful*



N°227  
*cherrific*



N°230  
*red a porter*



N°190  
*true love*

4 NEW  
SHADES

ARTDECO

# PERFECT MAT LIPSTICK

134.xxx / 4g

BASIC

## The ultimate lipstick for kissable lips with a stylish matte finish

- The Perfect Mat Lipstick combines **rich colour** with a **matte finish**.
- The result: An extra **comfortable formula** for divinely beautiful lips!
- The **long-lasting** matte lipstick applies an **intense layer** of the matte colour to the lips. This leaves an incredibly **even and soft finish**. Thanks to its long-lasting texture, the Perfect Mat Lipstick is **extra durable** on the lips and doesn't fade.
- **Candelilla wax** keeps the delicate skin of the lips soft and smooth. This means the lipstick **won't dry out your lips**.
- To top it all off, it has a **delicate vanilla** scent for truly irresistible lips. After all, lips are there to be kissed, right?

4 NEW COLORS

COMES IN A FOLDING BOX



## COLOR RANGE – PERFECT MAT LIPSTICK

ARTDECO



*N°113*

*N°114*

*N°190 NEW*

*N°212 NEW*

*N°216*

*N°217*

*N°220*

*N°224*

*N°227 NEW*

*N°230 NEW*



*N°112*



*N°116*



*N°125*



*N°130*



*N°134*



*N°160*



*N°165*



*N°173*



*N°179*



*N°184*



*N°208*